

CASTLE HALL ACADEMY MAGAZINE

MARCH 2026





Characteristics of Exceptional Learners



Reasoning

I ask questions about my learning and independently work things out for myself.



Resilience

When things get challenging, I never give up and learn from my mistakes.



Responsibility

I choose to do the right thing even when nobody is watching.



Respect

My behaviour is exceptional. I show respect for all in my community.



Reflection

I take every opportunity to review and develop my learning and behaviour.

Work hard, be kind and follow staff instructions - everybody, everyday



Dear Parents/Carers,

As we move through the spring term, we continue to do our very best to support Year 11 students, who are approaching a crucial stage in their education. Following the Easter break, there will be just three full teaching weeks remaining before the GCSE examination season begins. Attendance during this time is absolutely vital to ensure students are fully prepared, confident and supported as they enter this final phase.

More broadly, attendance remains a key priority for all year groups. Every day in school matters, and regular attendance plays a significant role in academic progress, wellbeing and maintaining positive routines. We are grateful for your continued support in ensuring students attend school regularly and on time.

As we start to look ahead to the next academic year, I am delighted to share some very positive news regarding admissions. Our Year 7 intake for September 2026 is once again oversubscribed, and we have received a record number of first-choice applications and sibling preferences. This continued confidence in Castle Hall Academy is something we are extremely proud of and reflects the strong partnerships we have with our families and community.

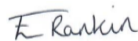
Finally, we would also like to recognise and thank Mr Dixon, Assistant Headteacher, for his admirable commitment and dedication to Castle Hall Academy over the past 11 years. He now leaves us to take up a Deputy Headteacher role, a richly deserved appointment.

Thank you, as always, for your ongoing support and commitment to our school community.

Kindest regards,



Mr P Brook
Headteacher



Miss Rankin
Head of School



YEAR 9 OPTIONS

Over recent weeks, students have taken part in a structured Options Programme designed to give them a clear understanding of the subjects available and what studying them at KS4 involves.

This has included options taster sessions, allowing students to experience KS4-style lessons across a wide range of subjects.

To support this further, students were provided with a comprehensive Options Booklet, outlining each subject on offer, the skills developed, and how courses link to future pathways and careers.

All the above information has been reinforced through dedicated Mastery sessions, where our staff guided students through the options process, discussed how to make balanced and appropriate choices, and encouraged thoughtful conversations about aspirations beyond Year 11.

This carefully planned approach ensures that our Year 9 students are well prepared for the next stage of their education and supported to choose pathways that suit their interests, strengths and future ambitions.





WORLD BOOK DAY

To celebrate World Book Day, students enjoyed a special Booknic, bringing together books, afternoon tea and thoughtful conversation. Pupils shared their favourite stories, discussed meaningful quotes and explained why their chosen books mattered to them. The event created a relaxed and engaging atmosphere that celebrated reading for pleasure and the power of stories to spark discussion, reflection and connection. A wonderful reminder of the joy that reading can bring.





WORLD BOOK DAY

World Book Day celebrations continued with our Year 7 readers stepping confidently into the spotlight. Pupils read aloud to their year group, sharing their love of books and inspiring others through their enthusiasm and growing confidence. It was a powerful reminder of how reading can bring people together, build confidence and create a shared sense of belonging. Well done to all our Year 7 students for representing our reading community so brilliantly.

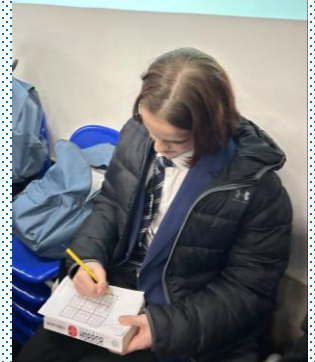
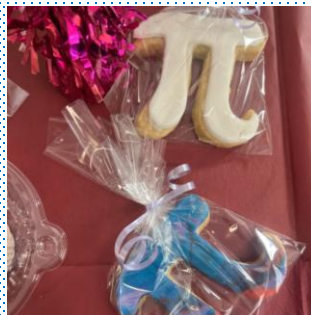
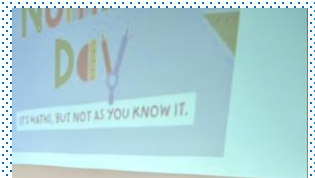


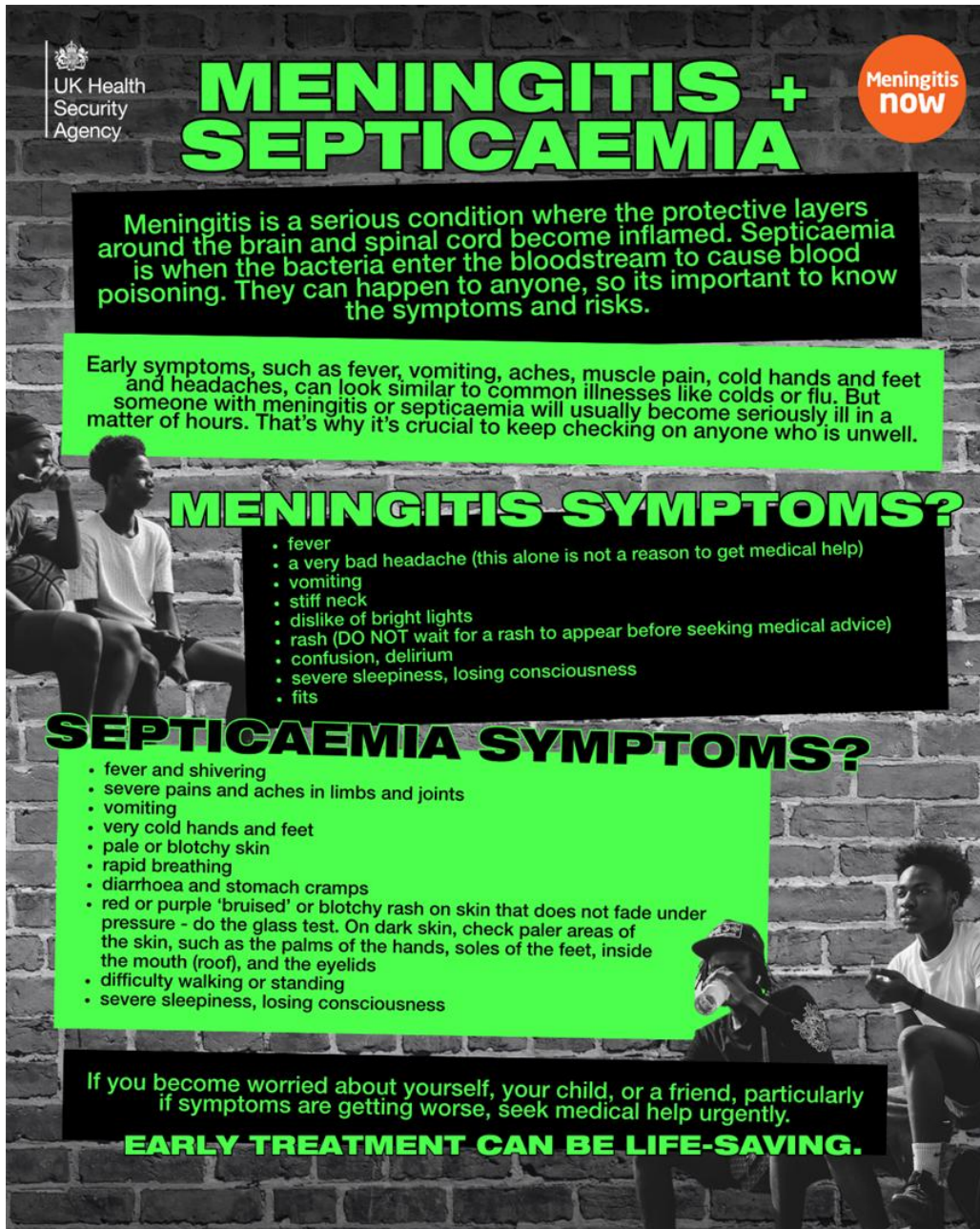
Maths



To celebrate Pi and World Maths Day, students got involved in a range of fun maths challenges at break and lunchtime. A recall competition ran to see how many digits of Pi students could remember, with prizes awarded to the top scorers in each year group.

Students were also invited to take part in a Maths/Pi logo competition, showcasing their creativity and love of maths. We received some fantastic entries, and it's been great to see such enthusiasm across the school.

And of course, our catering team rose to the occasion with some brilliant baking!





 **MENINGITIS + SEPTICAEMIA** 

Meningitis is a serious condition where the protective layers around the brain and spinal cord become inflamed. Septicaemia is when the bacteria enter the bloodstream to cause blood poisoning. They can happen to anyone, so it's important to know the symptoms and risks.

Early symptoms, such as fever, vomiting, aches, muscle pain, cold hands and feet and headaches, can look similar to common illnesses like colds or flu. But someone with meningitis or septicaemia will usually become seriously ill in a matter of hours. That's why it's crucial to keep checking on anyone who is unwell.

MENINGITIS SYMPTOMS?

- fever
- a very bad headache (this alone is not a reason to get medical help)
- vomiting
- stiff neck
- dislike of bright lights
- rash (DO NOT wait for a rash to appear before seeking medical advice)
- confusion, delirium
- severe sleepiness, losing consciousness
- fits

SEPTICAEMIA SYMPTOMS?

- fever and shivering
- severe pains and aches in limbs and joints
- vomiting
- very cold hands and feet
- pale or blotchy skin
- rapid breathing
- diarrhoea and stomach cramps
- red or purple 'bruised' or blotchy rash on skin that does not fade under pressure - do the glass test. On dark skin, check paler areas of the skin, such as the palms of the hands, soles of the feet, inside the mouth (roof), and the eyelids
- difficulty walking or standing
- severe sleepiness, losing consciousness

If you become worried about yourself, your child, or a friend, particularly if symptoms are getting worse, seek medical help urgently.

EARLY TREATMENT CAN BE LIFE-SAVING.



PARENTS' EVENINGS

It has been a very busy few weeks of Parents' Evenings, and we would like to extend our sincere thanks to all parents and carers who attended. Your time, commitment, and partnership with us make a real difference. These evenings are an important opportunity to discuss progress, celebrate successes, and identify the next steps in supporting each student to achieve their very best.

We truly appreciate your support and engagement.

THANK YOU!



SHOW TIME

Tickets for our upcoming production of High School Musical Jr are now available to purchase via ParentPay. Students and staff have been working incredibly hard in rehearsals, and the energy, talent and teamwork on display have been fantastic. It promises to be a brilliant show, and we would love you to come along for a great evening of entertainment and celebration of our performing arts community. Thank you for your continued support — we can't wait to see you there!

ADULT TICKET - £6
CHILD TICKET - £4

CASTLE HALL ACADEMY | PRESENTS | THIS YEAR'S ACADEMY PRODUCTION

Disney
HIGH SCHOOL MUSICAL JR.

SHOWCASING ON
TUESDAY 28TH APRIL
WEDNESDAY 29TH APRIL
THURSDAY 30TH APRIL
6PM

RUN TIME APROX 1 HOUR, WITH A 20 MIN INTERVAL, DRINKS & SNACKS AVAILABLE FOR PURCHASE.

RICHARD THORPE AVENUE, MIRFIELD, WF14 9PH
BOOK YOUR SEATS VIA PARENTPAY





ATTENDANCE MATTERS

Why Attendance Matters: Building Strong Foundations for Success

Every school day counts. Regular attendance is one of the most important factors in a child's academic success and overall well-being. When students attend school consistently, they gain more than just knowledge—they develop habits, friendships, and skills that will serve them for life.

1. Learning Happens Every Day

Lessons are designed to build on each other. Missing even a few days can make it harder for children to keep up, leading to gaps in understanding. Regular attendance ensures your child stays on track and feels confident in their learning.

2. Attendance Builds Resilience and Routine

Being in school teaches responsibility, time management, and resilience—skills that are essential beyond the classroom.

3. Social Connections Matter

School is not just about academics; it's where children form friendships and learn to work with others. Absences can make it harder to maintain these connections, which are vital for emotional and social development.

4. The Long-Term Impact

Research shows that students who attend school regularly are more likely to achieve higher grades and have better opportunities later in life. Good attendance habits now set the stage for future success.

How Parents Can Help

- Establish a morning routine to make getting ready stress-free.
- Schedule appointments outside school hours whenever possible.
- Communicate with school staff if your child faces challenges that affect attendance—we're here to help.

Let's continue to work together to make sure every child gets the best start possible.

Any absence must be reported to the Attendance Office by:

- phoning 01924 520500 and selecting option 2
- phoning 01924 523232
- Emailing studentabsence@castlehall.com

Please do this by 8:00am each day.



UNIFORM EXCHANGE

**UNIFORM
EXCHANGE**

What we supply to families



Blazers



Cardigans



Coats & Jackets



Dresses



Jumpers



Polo Shirts



Pumps



Shirts



Shoes



Skirts



Socks



Sports kits



Tights



Trainers



Trousers

Get free school uniform for your child

People need free school uniform for 2 reasons ... they either can't afford it or they want to wear reused uniform to help save the environment.

That's why Uniform Exchange provide uniform and it's so easy to get it.

Poverty affects 1 in 3 households in Kirklees and we estimate at least 7,000 schoolchildren will benefit from the service in 2023 so if you need help you're certainly not alone.

Simply fill in the online form and your free uniform will be delivered to your school or nearest library within days.

REQUEST UNIFORM <https://www.uniform-exchange.org/free-school-uniform/>



We're recruiting Volunteer Police Cadets

JOIN
US

Do you know a young person, aged 13 to 17, who is looking for the opportunity to learn new skills and make a difference in their local community?

If so, joining our cadets could be the ideal opportunity for them, offering the chance to:

- Learn new skills
- Enhance their CV
- Complete the Duke of Edinburgh's Award
- Make new friends
- Gain an insight into policing

Recruitment opens on 13 March 2026 – with demand for places expected to be high!

For more information and to access the application form visit www.westyorkshire.police.uk/volunteer-police-cadets or scan the QR code.



Make a difference
Join the police

www.westyorkshire.police.uk/joinus



ART WORKSHOP

for 10 to 14 year olds

Draw your own....

ANIMAL MASHUPS

FRIDAY
10TH APRIL

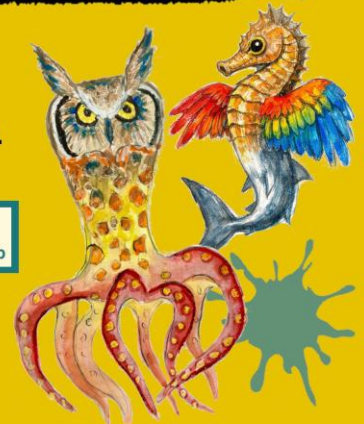
9.30am - 12pm
£15pp

TO BOOK go to
bookwhen.com/gomersalartclub

Qualified TA
Professional Artist
DBS checked
First aid trained

GOMERSAL ART CLUB
Creative fun for all

LOCATION: Howard Park Community School,
St Peg Lane, Cleckheaton, BD19 3SD





GOMERSAL ART CLUB

Creative fun for all

ART SESSIONS FOR 10 TO 14 YEAR OLDS

A school holiday art & craft session for 10 to 14 year olds.

Fri 10th April - 9.30 to 12pm

DRAWING Animal Mashups

£15 per person

TO BOOK go to;
bookwhen.com/gomersalartclub

Questions to:
Message/WhatsApp: 07739045339
Email: sallyhalldesign@yahoo.com

Qualified TA
Professional artist
DBS checked
First aid trained

LOCATION: Howard Park Community School, St Peg Lane, Cleckheaton, BD19 3SD



PROJECT COMMUNITIES CIC EASTER SEND CAMPS

TUESDAY 7th APRIL TO
FRIDAY 10th APRIL
@ HONLEY COMMUNITY CENTRE, HD9 6DY

FREE HOLIDAY ACTIVITIES FOR YOUNG PEOPLE WITH SEND

MULTI-SPORTS INCLUDING FOOTBALL,
CRICKET, DODGEBALL, ARCHERY AND
MANY MORE!

FREE MEAL FOR ALL WHO ATTEND

TO BOOK YOUR PLACE TODAY:

EMAIL:
PROJECTCOMMUNITIES@OUTLOOK.COM

CALL: 07719 698644

CHILD'S NAME, CHILD'S DOB,
ANY MEDICAL INFORMATION,
AND DIETARY REQUIREMENTS,
SEND DETAILS, POSTCODE, HOUSE NUMBER,
DATES REQUIRED, CONTACT PHONE NUMBER

10 AM
UNTIL
2 PM

Ages
8 - 18



Kirklees
Council

Where children with SEND thrive!





COMMUNITY




KIRKLEES EASTER HAF ACTIVITIES: FOR CHILDREN & YOUNG PEOPLE WITH SEND





**Book
Here**




www.bookwhen.com/sportworksyorks

Tuesday,
31 March 2026
Thursday,
2 April 2026
Tuesday,
7 April 2026
Thursday,
10 April 2026

12:00 PM - 4:00 PM

Heckmondwike Table Tennis
Centre

- Group-based session (1:4 staff to child ratio)
- Packed Lunch is Included
- We invite parents to call to discuss their child's needs if personal care assistance is required.

For more info, please contact me at:
 Rachael.bland@sportworkltd.co.uk
 **0191 5800 120**



FOOTBALL & SPORTS CAMP

FUN ACTIVITIES FOR 8 - 17 YEAR OLDS WITH DISABILITIES AND LEARNING DISABILITIES

"Before joining, I didn't like or do any sports! I am now more confident and now take part in football, netball and athletics."

WHEN

Week One: Tuesday 31st March & Wednesday 1st April
 Week Two: Tuesday 7th & Wednesday 8th April

10AM - 2PM DAILY
 INDIVIDUAL DAY & FULL WEEK BOOKINGS AVAILABLE

WHERE?
 HAT-TRICKS, MILFORD STREET, HUDDERSFIELD (HD1 3DY)

FREE | ALL SPORTING ABILITIES WELCOME | LUNCH INCLUDED

TO GET INFORMATION ON HOW TO BOOK CONTACT US VIA:

EMAILING: help@htaafcoundation.com
 CALLING: 01484 503773

All of our staff are FA/UEFA Qualified, have completed qualification in delivering disability sport and hold up to date Safeguarding and First Aid Certification





COMMUNITY



Growing Works SEND Sessions

Nurturing Healthy Lives Outdoors

Free outdoor nature play, exploration and craft sessions for families with SEND at Oakwell Hall Country Park, Nova Ln, Birstall, Batley WF17 9LF

Wednesdays 1st and 8th April
10:00am – 2:00pm

Open for children age 12 and under with SEND/SEMH who live in Kirklees or attend Kirklees schools
Guardians required to attend, siblings of any age welcome

Free lunch provided, Booking essential



Contact Rachel for further information via email: info@growingworks.org.uk



www.growingworks.org.uk Registered charity 1160003

Outdoor Learning Team | Kirklees COUNCIL | Little Deer Wood

WACKY

Wild. Activities. Challenging. Kirklees. Young People at Little Deer Wood Activity Centre
Shepley Bridge Marina, Mirfield, WF14 9HR

Young people with Special Educational Needs & Disabilities

WACKLES SCHOOL'S OUT!

Wednesday 1st April
Thursday 2nd April
Tuesday 7th April
Wednesday 8th April
10.30am – 3.30pm

£15 per session

ACTIVITIES:

- Cooking
- Gardening
- Arts & Crafts
- Bush craft
- Bouldering
- Sports
- Archery
- and more...

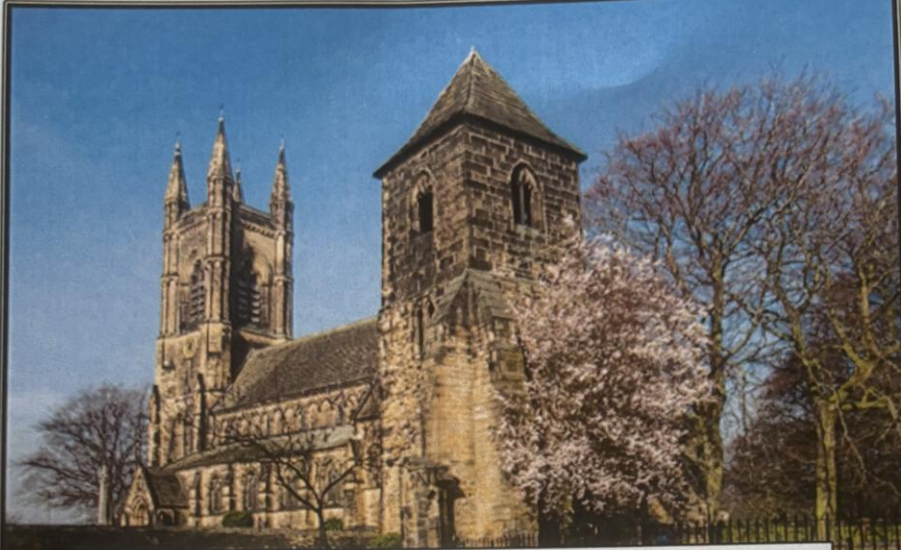
REGISTER FOR YOUR PLACE.
FOR AGES 10-24

SCAN THE QR CODE TO BOOK

FOR MORE INFO: Call: 01484 225952 or Email: littledeerwood@kirklees.gov.uk







HERITAGE FUN DAY

St Mary's Heritage Fun Day

Saturday 11th April

10am – 3pm

St Mary's Church, Graveyard and
Grounds – Church Lane, Mirfield

Join us for a day of fun and music
whilst learning more about the
history of this precious
community resource.

- Free Entry
- Refreshments
- Activities
- Concerts
- Quizzes
- Family Treasure Trail
- Tower Tours
- Heritage Talks



KEY DATES 2025-26

TRAINING/REVIEW DAYS

(staff only)

Monday 1 September 2025
Friday 21 November 2025
Thursday 29 January 2026
Friday 30 January 2026
Friday 13 March 2026
Thursday 2 July 2026
Friday 3 July 2026

FIRST DAY BACK DATES

Year 7 Tuesday 02 September 2025
Year 11 Wednesday 03 September 2025
Year 10 Thursday 04 September 2025
Year 8 Friday 05 September 2025
Year 9 Monday 08 September 2025

2025-26 TERM 1

Tuesday 2 September 2025 to Friday 24 October 2025

Holiday: Saturday 25 October 2025 to Sunday 2 November 2025

2025-26 TERM 2

Monday 3 November 2025 to Friday 19 December 2025

Holiday: Saturday 20 December 2025 to Sunday 4 January 2026

2025-26 TERM 3

Monday 5 January 2026 to Friday 13 February 2026

Holiday: Saturday 14 February 2026 to Sunday 22 February 2026

2025-26 TERM 4

Monday 23 February 2026 to Friday 27 March 2026

Holiday: Saturday 28 March 2026 to Sunday 12 April 2026

2025-26 TERM 5

Monday 13 April 2026 to Friday 22 May 2026

Holiday: Saturday 23 May 2026 to Sunday 31 May 2026

2025-26 TERM 6

Monday 1 June 2026 to Friday 17 July 2026

Holiday: Saturday 18 July 2026 onwards

BANK HOLIDAYS

Monday 04 May 2026

INFORMATION/PARENTS' EVENING DATES

Year 7 Thursday 18 September 2025
Year 11 Thursday 27 November 2025
Year 7 Thursday 5 February 2026
Year 10 Thursday 12 February 2026
Year 9 Thursday 26 February 2026
Year 8 Thursday 12 March 2026
Year 11 Thursday 26 March 2026
Year 10 Thursday 9 July 2026





KEY DATES 2026-27

TRAINING/REVIEW DAYS

(staff only)

Tuesday 1 September 2026

TBC

TBC

TBC

TBC

FIRST DAY BACK DATES

Year 7 Wednesday 2 September 2026

Year 11 Wednesday 2 September 2026

Year 10 Thursday 3 September 2026

Year 8 Friday 4 September 2026

Year 9 Monday 7 September 2026

2026-27 TERM 1

Wednesday 2 September 2026 to Friday 23 October 2026

Holiday: Saturday 24 October 2026 to Sunday 1 November 2026

2026-27 TERM 2

Monday 2 November 2026 to Friday 18 December 2026

Holiday: Saturday 19 December 2026 to Sunday 3 January 2027

2026-27 TERM 3

Monday 4 January 2027 to Friday 12 February 2027

Holiday: Saturday 13 February 2027 to Sunday 21 February 2027

2026-27 TERM 4

Monday 22 February 2027 to Thursday 25 March 2027

Holiday: Friday 26 March 2027 to Sunday 11 April 2027

2026-27 TERM 5

Monday 12 April 2027 to Friday 28 May 2027

Holiday: Saturday 29 May 2027 to Sunday 6 June 2027

2026-27 TERM 6

Monday 7 June 2027 to Friday 16 July 2027

Holiday: Saturday 17 July 2027 onwards

BANK HOLIDAYS

Monday 3 May 2027

INFORMATION/PARENTS' EVENING DATES

Year 7 TBC

Year 11 TBC

Year 7 TBC

Year 10 TBC

Year 9 TBC

Year 8 TBC

Year 11 TBC

Year 10 TBC

Inset and Parents' Evening Dates will be shared at a later date.

