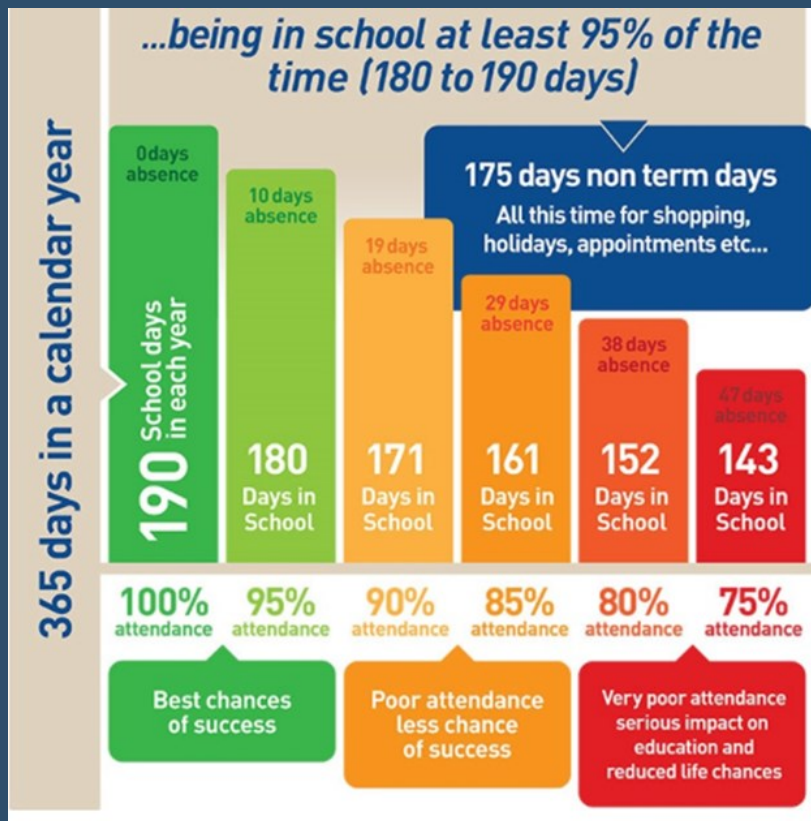


Hello and welcome to Issue 3, of the Y6 Transition Newsletter.

ATTENDANCE AND PUNCTUALITY



Good attendance and punctuality at school is not just beneficial, it's essential. Attending school is directly linked to improved exam performance which should in turn lead to further learning opportunities and better job prospects. As well as this, going to school helps to develop friendships.

We also ask that doctor or dentist appointments are made after school where possible, so that students don't miss a minute of learning.

Students who attend school 95%-100% of the time are more likely to get two grades higher in their exams compared to their peers.

Students who attend school 95%-100% of the time also have more productive and successful relationships with their peers.

THOUGHT OF THE WEEK

What do I do if I am worried about something?

You can speak to any member of staff in the academy (all staff wear a staff lanyard and an ID badge, so it is easy for you to identify them) about things that may be worrying you. You will have some staff that you see everyday, so one of these members of staff might be who you feel more comfortable talking to, or it could be that you want to speak to a member of staff you do not know as well as you feel more comfortable speaking to them.

Ultimately, you need to know that everyone who works at Castle Hall Academy is here to listen, support and help you in whatever way they can.

SUBJECT CHALLENGE

HUMANITIES DEPARTMENT

GEOGRAPHY

Welcome to Year 6's, soon to be Year 7's! Geography is probably the best subject you will do throughout all your years at Castle Hall. It is the most exciting, interesting, fact filled, relevant, important subject the World has ever known!!!

In Geography you will study at a local, national and international level exploring the links between people and the environment. The Geography Department will take you to exotic places both near and far like Tunisia, Nigeria, Bangladesh, Hornsea, and Malham Cove to name but a few.

You learn about how the UK landscaped was shaped by the rivers and the seas. You will learn about the biggest challenges facing the people of the world.

So once more welcome to Geography, take your seat and buckle in for the most electrifying subject that you will ever do at Castle Hall 😊



GEOGRAPHY CHALLENGE

Design your own flag

This activity involves you researching some flags from around the world and discovering the meaning behind some of them e.g. Republic of Ireland has 3 colours on their flag - Green, White and Orange. Green to represent the Catholic Religion, White meaning Peace and Orange representing the Protestant Religion.

After you have researched some flags make your own flag and think of the colours you would use and what they would mean.

Email glawlor@castlehall.com with your ideas. Best ones get a prize in September when you start.



Postcard to School

Think about a particular place, a country or landmark you have visited e.g. seaside, local park, canal path. I want you to research it. Think about looking for facts, photos, information etc about this place. I want you to create a postcard telling me (Mr Lawlor) all about it. Email any postcards to glawlor@castlehall.com Best ones get a prize in September when you start.



SUBJECT CHALLENGE

HISTORY

You will already have studied some History in Primary school; The Ancient Greeks, Romans and Egyptians and even some other areas! You may also have watched Horrible Histories and know lots about the Stormin Normans, Terrible Tudors or the Slimy Stuarts! These are just some of the exciting enquiries we will investigate.

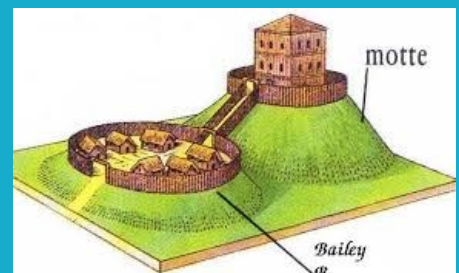
At Castle Hall we aim to bring History alive, with exciting, yet meaningful enquiries that will extend your knowledge and understanding of the world we live in. We also use artefacts to bring History to life - Norman chain mail, a Victorian washing machine and a World War 1 soldiers helmet, to name a few!



HISTORY CHALLENGE

In Year 7 we will look at how castles have become icons of our nations history, how they have been used and how they have developed throughout history. But surprisingly, some of the first castles were built by a Frenchman, William the Conqueror!

The first castles he made were Motte and Bailey castles. Historians sometimes use models to present the past. Your first challenge as a Historian is to **create a model Motte and Bailey castle**. You can use lots of different materials and be as creative as possible!



In Year 7, we will look at the Black Death (1348) and the terrible impact it had on the whole world. Currently we are going through a pandemic that is affecting lots of people. The Black Death was also a global pandemic that impacted lots of people. Historians are great at comparing events such as these and seeing whether things have really changed from the past.

Your second challenge as a Historian is to **research the Black Death and what impact it had on people**. Was it different to the impact the current Pandemic has had on us? Has how we deal with Pandemics changed? You may expect lots of differences, after all that was almost 700 years ago, however you may be interested to find some similarities.

Email your work or photos of your History challenges to glawlor@castlehall.com



SUBJECT CHALLENGE

RELIGIOUS STUDIES

Hello Year 6's! Welcome to the Religious Studies department at Castle Hall Academy. We are all super excited and looking forward to meeting you all and teaching you all about different beliefs and practices.

There are about 4,200 different religions in the world. We explore the 6 major religions in the world which are Christianity, Buddhism, Sikhism, Hinduism, Islam and Judaism. Not only do we look at what these religions believe in, we also look at how they practice their religion and how it impacts on their daily life.

We also explore alternative religions. This includes Jehovah's witness, Humanism and The Amish. Some of these you may never have heard of, which is okay. We can't wait to teach you all about them.

